

EMERGENCY INFORMATION

FIRE EMERGENCY

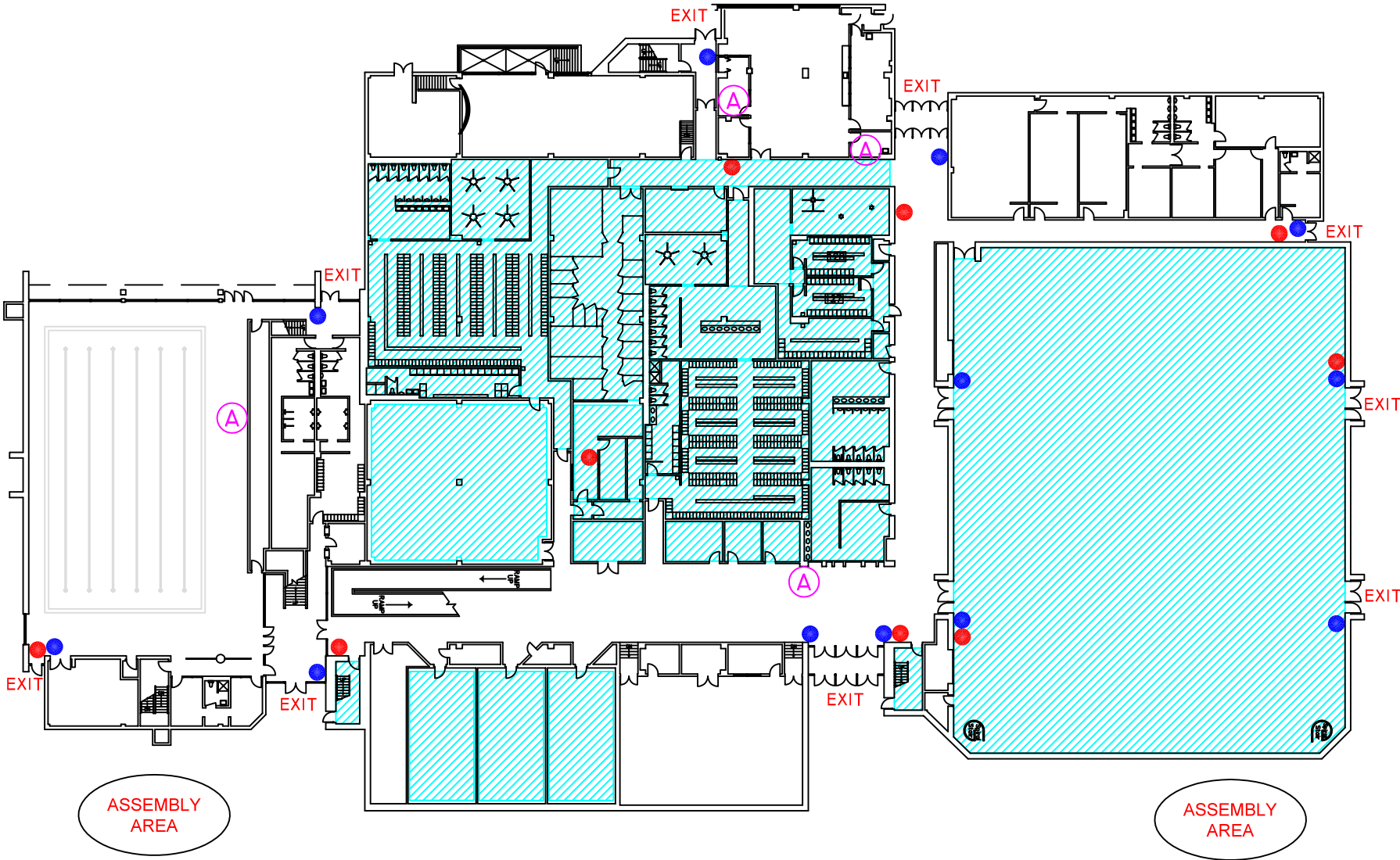
WHEN ALARM SOUNDS, TURN OFF ELECTRICAL EQUIPMENT, AND WALK TO THE NEAREST EXIT. MOVE TO THE EVACUATION ASSEMBLY AREA AND REMAIN THERE UNTIL NOTIFIED "ALL CLEAR". PLEASE REMEMBER THAT YOU MIGHT NOT BE ABLE TO RE-ENTER THE BUILDING.

SEVERE WEATHER

WHEN NOTIFIED OF SEVERE WEATHER, SEEK SHELTER ON THE LOWEST BUILDING LEVEL IN AREAS WITHOUT GLASS. THESE AREAS ARE ILLUSTRATED WITH BLUE LINES. REMAIN THERE UNTIL NOTIFIED "ALL CLEAR" BY CAMPUS POLICE, A BUILDING MANAGER, OR THE LOCAL WEATHER STATION. DO NOT GO OUTDOORS UNTIL THE WEATHER EVENT HAS SUBSIDED.

MEDICAL EMERGENCY

IF A MEDICAL EMERGENCY OCCURS, CALL 911 AND PROVIDE AS MUCH INFORMATION AS POSSIBLE TO THE OPERATOR. STAY ON THE LINE UNTIL THE OPERATOR INDICATES YOU MAY HANG UP. THE 911 OPERATOR WILL CALL UNIVERSITY POLICE AND INFORM THEM OF THE EMERGENCY.



LEGEND	
●	FIRE EXTINGUISHER
●	PULL STATION
A	A.E.D. (AUTOMATED ELECTRIC DEFIBRILLATOR)
	SHELTER IN PLACE

MAGGS CENTER - SALISBURY UNIVERSITY